

**Open Spring Mounts**  
(Rubber cup construction)

1" deflection

Point load (lbs)	Isolator Model
1 to 50	BA-121
51 to 80	BA-122
81 to 130	BA-123
131 to 210	BA-124
211 to 300	BA-125
301 to 370	BA-126
371 to 700	BA-127
701 to 750	BB-156
751 to 910	BB-157
911 to 1500	BB-158
1501 to 2082	BB-159
2083 to 2603	BB-159-161

**Neoprene mounts**

Point load (lbs)	Isolator Model
1 to 30	FMD-A-1
31 to 40	FMD-A-2
41 to 70	FMD-A-3
71 to 115	FMD-A-4
116 to 130	FMD-B-1
131 to 165	FMD-B-2
166 to 235	FMD-B-3
236 to 375	FMD-B-4
376 to 400	FMD-E-3
401 to 500	FMD-E-4
501 to 750	FMD-F-1
751 to 1000	FMD-F-2
1001 to 1500	FMD-F-3
1501 to 2200	FMD-F-4

**Neoprene hangars**

Point load (lbs)	Isolator Model
1 to 30	HND-A-1
31 to 40	HND-A-2
41 to 70	HND-A-3
71 to 120	HND-A-4
121 to 165	HND-B-1
166 to 235	HND-B-2
236 to 375	HND-B-3
376 to 572	HND-B-4
573 to 745	HND-C-3
746 to 1307	HND-C-4
1308 to 2240	HND-D-2
2241 to 3000	HND-D-3
3001 to 4200	HND-D-4

**Spring + Neospring Hangars**

1" deflection

Point load (lbs)	Isolator Model Spring
1 to 50	HSA-121
51 to 80	HSA-122
81 to 130	HSA-123
131 to 210	HSA-124
211 to 300	HSA-125
301 to 370	HSA-126
371 to 700	HSA-127
701 to 750	HSB-109
751 to 910	HSB-110
911 to 1080	HSB-111
1081 to 1250	HSB-112
1251 to 1330	HSB-109-113
1331 to 1380	HSB-110-113
1381 to 1550	HSB-111-113
1551 to 1832	HSB-112-113

Point load (lbs)	Isolator Model Neospring
1 to 50	HNSA-A3-121
51 to 80	HNSA-A4-122
81 to 130	HNSA-B1-123
131 to 210	HNSA-B2-124
211 to 300	HNSA-B3-125
301 to 370	HNSA-B3-126
371 to 582	HNSA-B4-127
583 to 620	HNSB-C3-108
621 to 750	HNSB-C4-109
751 to 910	HNSB-C4-110
911 to 1080	HNSB-C4-111
1081 to 1250	HNSB-C4-112
1251 to 1330	HNSB-D2-109-113
1331 to 1380	HNSB-D2-110-113
1381 to 1550	HNSB-D2-111-113
1551 to 1832	HNSB-D2-112-113

2" deflection

Point load (lbs)	Isolator Model	
	Spring	Neospring
1 to 80	HSB-140	HNSB-A4-140
81 to 160	HSB-141	HNSB-B1-141
161 to 310	HSB-142	HNSB-B3-142
311 to 410	HSB-143	HNSB-B4-143
411 to 595	HSB-144	HNSB-C3-144
596 to 647	HSB-141-146B	HNSB-C3-141-146B
648 to 1190	HSB-147	HNSB-C4-147
1191 to 1576	HSB-148A	HNSB-D2-148A
1577 to 1690	HSB-147-146B	HNSB-D2-147-146B
1691 to 2076	HSB-148A-146B	HNSB-D2-148A-146B

0.75" deflection

Point load (lbs)	Isolator Model Spring
1 to 25	HSS-021
26 to 55	HSS-022
56 to 85	HSS-023
86 to 125	HSS-024

**NOTES :**

- Above tables offer the most economic isolator selection consistent with VIMCO™ suggested specifications. Please contact factory for other selection options.
- Selection tables above incorporate the use of height adjustment shims. If the use of shims is not acceptable to engineer, use individual product submittal sheets to re-select lower load isolators in higher series.

**Example :**

1" deflection housed spring mounts for equipment with 4 support points (300lb, 1000lb, 1200lb, 1400lb)

	Point 1	Point 2	Point 3	Point 4
Load	300 lb	1000 lb	1200 lb	1400 lb
Normal selection	<b>ZB-125</b>	AB-1-111	AB-1-112	AB-1-111-113
Revised selection (no shims)	<b>AB-1-106</b>	AB-1-111	AB-1-112	AB-1-111-113

**Open Spring Mounts**  
(Rubber cup construction)

1" deflection

Point load (lbs)	Isolator Model
1 to 40	BA-121
41 to 66	BA-122
67 to 110	BA-123
111 to 173	BA-124
174 to 246	BA-125
247 to 300	BA-126
301 to 466	BA-127
467 to 500	BB-155
501 to 600	BB-156
601 to 733	BB-157
734 to 1200	BB-158
1201 to 1666	BB-159
1667 to 2083	BB-159-161

**Neoprene mounts**

Point load (lbs)	Isolator Model
1 to 30	FMD-A-1
31 to 40	FMD-A-2
41 to 70	FMD-A-3
71 to 115	FMD-A-4
116 to 130	FMD-B-1
131 to 165	FMD-B-2
166 to 235	FMD-B-3
236 to 375	FMD-B-4
376 to 400	FMD-E-3
401 to 500	FMD-E-4
501 to 750	FMD-F-1
751 to 1000	FMD-F-2
1001 to 1500	FMD-F-3
1501 to 2200	FMD-F-4

**Neoprene hangars**

Point load (lbs)	Isolator Model
1 to 30	HND-A-1
31 to 40	HND-A-2
41 to 70	HND-A-3
71 to 120	HND-A-4
121 to 165	HND-B-1
166 to 235	HND-B-2
236 to 375	HND-B-3
376 to 573	HND-B-4
574 to 745	HND-C-3
746 to 1307	HND-C-4
1308 to 2240	HND-D-2
2241 to 3000	HND-D-3
3001 to 4200	HND-D-4

**Spring + Neospring Hangars**

1" deflection

Point load (lbs)	Isolator Model Spring
1 to 40	HSA-121
41 to 66	HSA-122
67 to 110	HSA-123
111 to 173	HSA-124
174 to 246	HSA-125
247 to 300	HSA-126
301 to 466	HSA-127
467 to 500	HSB-108
501 to 600	HSB-109
601 to 733	HSB-110
734 to 866	HSB-111
867 to 1000	HSB-112
1001 to 1066	HSB-109-113
1067 to 1106	HSB-110-113
1107 to 1240	HSB-111-113
1241 to 1466	HSB-112-113

Point load (lbs)	Isolator Model Neospring
1 to 40	HNSA-A3-121
41 to 66	HNSA-A4-122
67 to 110	HNSA-B1-123
111 to 173	HNSA-B2-124
174 to 246	HNSA-B3-125
247 to 300	HNSA-B3-126
301 to 466	HNSA-B4-127
467 to 500	HNSB-C3-108
501 to 600	HNSB-C4-109
601 to 733	HNSB-C4-110
734 to 866	HNSB-C4-111
867 to 1000	HNSB-C4-112
1001 to 1066	HNSB-D2-109-113
1067 to 1106	HNSB-D2-110-113
1107 to 1240	HNSB-D2-111-113
1241 to 1466	HNSB-D2-112-113

2" deflection

Point load (lbs)	Isolator Model	
	Spring	Neospring
1 to 66	HSB-140	HNSB-A3-140
67 to 133	HSB-141	HNSB-B1-141
134 to 250	HSB-142	HNSB-B3-142
251 to 333	HSB-143	HNSB-B3-143
334 to 476	HSB-144	HNSB-B4-144
477 to 518	HSB-141-146B	HNSB-B4-141-146B
519 to 650	HSB-142-146B	HNSB-C3-142-146B
651 to 953	HSB-147	HNSB-C4-147
954 to 1261	HSB-148A	HNSB-D2-148A
1262 to 1353	HSB-147-146B	HNSB-D2-147-146B
1354 to 1661	HSB-148A-146B	HNSB-D2-148A-146B

0.75" deflection

Point load (lbs)	Isolator Model Spring
1 to 20	HSS-021
21 to 44	HSS-022
45 to 70	HSS-023
71 to 100	HSS-024

**NOTES :**

- Above tables offer the most economic isolator selection consistent with '50% additional travel to solid' specifications. These tables should only be used when there is uncertainty over calculated point loads. Otherwise use VIMCO™ standard selection charts (S-1100.10).
- Selection tables above incorporate the use of height adjustment shims. If the use of shims is not acceptable to engineer, use individual product submittal sheets to re-select lower load isolators in higher series.

Example :

1" deflection housed spring mounts for equipment with 4 support points (300lb, 1000lb, 1200lb, 1400lb)

	Point 1	Point 2	Point 3	Point 4
Load	300 lb	1000 lb	1200 lb	1400 lb
Normal selection	<b>ZB-126</b>	AB-1-112	AB-1-111-113	AB-1-112-113
Revised selection (no shims)	<b>AB-1-106</b>	AB-1-112	AB-1-111-113	AB-1-112-113

# LOAD SELECTION TABLES



**Table 1**  
Neoprene mounts

Point load (lbs)	Isolator Model
1 to 30	FMD-A-1
31 to 40	FMD-A-2
41 to 70	FMD-A-3
71 to 115	FMD-A-4
116 to 130	FMD-B-1
131 to 165	FMD-B-2
166 to 235	FMD-B-3
236 to 375	FMD-B-4
376 to 400	FMD-E-3
401 to 500	FMD-E-4
501 to 750	FMD-F-1
751 to 1000	FMD-F-2
1001 to 1500	FMD-F-3
1501 to 2200	FMD-F-4



**Table 2**  
Open Spring Mounts  
(Rubber cup construction)

Point load (lbs)	Isolator Model
1 to 50	BA-121
51 to 80	BA-122
81 to 130	BA-123
131 to 210	BA-124
211 to 300	BA-125
301 to 370	BA-126
371 to 582	BA-127
583 to 620	BB-155
621 to 750	BB-156
751 to 910	BB-157
911 to 1500	BB-158
1501 to 2080	BB-159
2081 to 2603	BB-159-161

*\* For models with base plate specify BD i/o BA and BE i/o BB*



**Table 3a**  
Housed Spring Mounts  
(1" deflection)

Point load (lbs)	Isolator Model
1 to 50	ZB-121
51 to 80	ZB-122
81 to 130	ZB-123
131 to 210	ZB-124
211 to 300	ZB-125
301 to 370	ZB-126
371 to 582	ZB-127
583 to 620	AB-1-108
621 to 750	AB-1-109
751 to 910	AB-1-110
911 to 1080	AB-1-111
1081 to 1250	AB-1-112
1251 to 1330	AB-1-109-113
1331 to 1380	AB-1-110-113
1381 to 1550	AB-1-111-113
1551 to 1832	AB-1-112-113



**Table 3b**  
Housed Spring Mounts  
(2" deflection)

Point load (lbs)	Isolator Model
1 to 80	AB-1-140
81 to 160	AB-1-141
161 to 310	AB-1-142
311 to 410	AB-1-143
411 to 595	AB-1-144
596 to 647	AB-1-141-146B
648 to 1190	AB-1-147
1191 to 1576	AB-1-148A
1577 to 1690	AB-1-147-146B
1691 to 2076	AB-1-148A-146B



**Table 4**  
Neoprene hangars

Point load (lbs)	Isolator Model
1 to 30	HND-A-1
31 to 120	HND-A-4
121 to 165	HND-B-1
166 to 235	HND-B-2
236 to 375	HND-B-3
376 to 572	HND-B-4
573 to 745	HND-C-3
746 to 1307	HND-C-4
1308 to 2240	HND-D-2
2241 to 3000	HND-D-3
3001 to 4200	HND-D-4



**Table 5a**  
Spring hangars  
(1" deflection)

Point load (lbs)	Isolator Model
1 to 50	HSA-121
51 to 210	HSA-124
211 to 300	HSA-125
301 to 370	HSA-126
371 to 582	HSA-127
583 to 620	HSB-108
621 to 750	HSB-109
751 to 910	HSB-110
911 to 1080	HSB-111
1081 to 1250	HSB-112
1251 to 1330	HSB-109-113
1331 to 1380	HSB-110-113
1381 to 1550	HSB-111-113
1551 to 1832	HSB-112-113



**Table 5b**  
Spring hangars  
(2" deflection)

Point load (lbs)	Isolator Model
1 to 80	HSB-140
81 to 160	HSB-141
161 to 310	HSB-142
311 to 410	HSB-143
411 to 595	HSB-144
596 to 647	HSB-141-146B
648 to 1190	HSB-147
1191 to 1576	HSB-148A
1577 to 1690	HSB-147-146B
1691 to 2076	HSB-148A-146B



**Table 6a**  
Neo-Spring hangars  
(1.5" deflection)

Point load (lbs)	Isolator Model
1 to 50	HNSA-A3-121
51 to 80	HNSA-A4-122
81 to 130	HNSA-B1-123
131 to 210	HNSA-B2-124
211 to 300	HNSA-B3-125
301 to 370	HNSA-B3-126
371 to 582	HNSA-B4-127
583 to 620	HNSB-C3-108
621 to 750	HNSB-C4-109
751 to 910	HNSB-C4-110
911 to 1080	HNSB-C4-111
1081 to 1250	HNSB-C4-112
1251 to 1330	HNSB-D2-109-113
1331 to 1380	HNSB-D2-110-113
1381 to 1550	HNSB-D2-111-113
1551 to 1832	HNSB-D2-112-113



**Table 6b**  
Neo-Spring hangars  
(2.5" deflection)

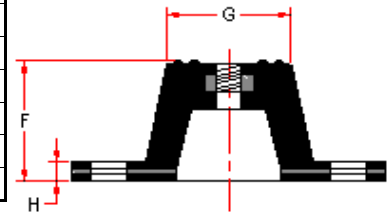
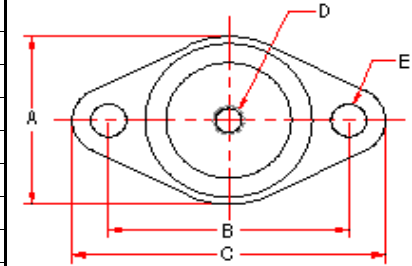
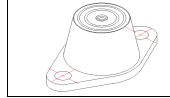
Point load (lbs)	Isolator Model
1 to 80	HNSB-A4-140
81 to 160	HNSB-B1-141
161 to 310	HNSB-B3-142
311 to 410	HNSB-B4-143
411 to 595	HNSB-C3-144
596 to 647	HNSB-C3-141-146B
648 to 1190	HNSB-C4-147
1191 to 1576	HNSB-D2-148A
1577 to 1690	HNSB-D2-147-146B
1691 to 2076	HNSB-D2-148A-146B

# VIBRATION MANAGEMENT CORPORATION

3532-A EAST TC JESTER , BROOKWOOD BUSINESS PARK , HOUSTON , TEXAS 77018 , U.S.A

INTERNET ADDRESS: [www.vimco.biz](http://www.vimco.biz)

ISOLATOR MODEL	MAX. LOAD (lbs)	DEFLECTION (inches)	ISOLATOR DIMENSIONS (inches)								COLOR
			A	B	C	D	E	F	G	H	
FMD-A-1	30	1/2	1 3/4	2 3/8	3 1/8	5/16	11/32	1 1/4	1 3/8	3/16	BLUE
FMD-A-2	40	1/2	1 3/4	2 3/8	3 1/8	5/16	11/32	1 1/4	1 3/8	3/16	RED
FMD-A-3	70	1/2	1 3/4	2 3/8	3 1/8	5/16	11/32	1 1/4	1 3/8	3/16	GREEN
FMD-A-4	115	1/2	1 3/4	2 3/8	3 1/8	5/16	11/32	1 1/4	1 3/8	3/16	BLACK
FMD-B-1	130	1/2	2 3/8	3	3 7/8	3/8	11/32	1 3/4	1 3/4	7/32	BLUE
FMD-B-2	165	1/2	2 3/8	3	3 7/8	3/8	11/32	1 3/4	1 3/4	7/32	RED
FMD-B-3	235	1/2	2 3/8	3	3 7/8	3/8	11/32	1 3/4	1 3/4	7/32	GREEN
FMD-B-4	375	1/2	2 3/8	3	3 7/8	3/8	11/32	1 3/4	1 3/4	7/32	BLACK
FMD-E-1	200	1/2	2 3/8	3 1/8	4	3/8	1/2	2	1 3/4	1/4	BLUE
FMD-E-2	300	1/2	2 3/8	3 1/8	4	3/8	1/2	2	1 3/4	1/4	RED
FMD-E-3	400	1/2	2 3/8	3 1/8	4	3/8	1/2	2	1 3/4	1/4	GREEN
FMD-E-4	500	1/2	2 3/8	3 1/8	4	3/8	1/2	2	1 3/4	1/4	BLACK
FMD-F-1	750	1/2	3 5/8	4 3/4	5 7/8	1/2	9/16	3 1/2	2 3/4	3/8	BLUE
FMD-F-2	1000	1/2	3 5/8	4 3/4	5 7/8	1/2	9/16	3 1/2	2 3/4	3/8	RED
FMD-F-3	1500	1/2	3 5/8	4 3/4	5 7/8	1/2	9/16	3 1/2	2 3/4	3/8	GREEN
FMD-F-4	2200	1/2	3 5/8	4 3/4	5 7/8	1/2	9/16	3 1/2	2 3/4	3/8	BLACK



N.T.S.

### NOTES

- Models FMD-E and FMD-F have rectangular bases.

### FEATURES

- \* Anti-skid top and bottom surfaces.
- \* Mounting holes furnished as standard
- \* Embedded steel plates for uniform loading.
- \* Oil + water resistant
- \* High deflection, low natural frequency
- \* Elements color-coded for easy field verification (*Color coding can be by 'dot' or 'complete element'*)

Notes / Remarks :

Project :  
Client :  
Consultant :  
Representative :

Title :

**FMD**  
Rubber-In-Shear Mount  
(Double deflection)

Drawing no.  
**S-2225.01**

Rev. 3